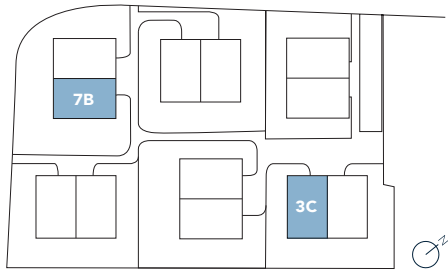
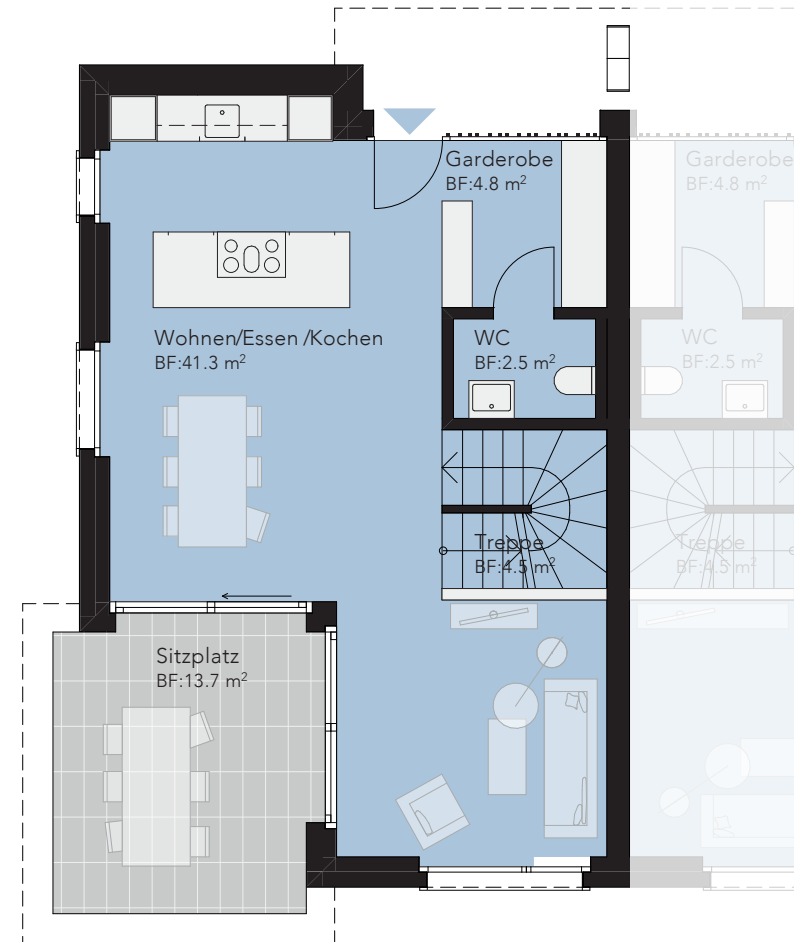


4½-ZIMMER- DOPPELEINFAMILIENHAUS-HÄLFTE 3C UND 7B (GESPIEGELT)

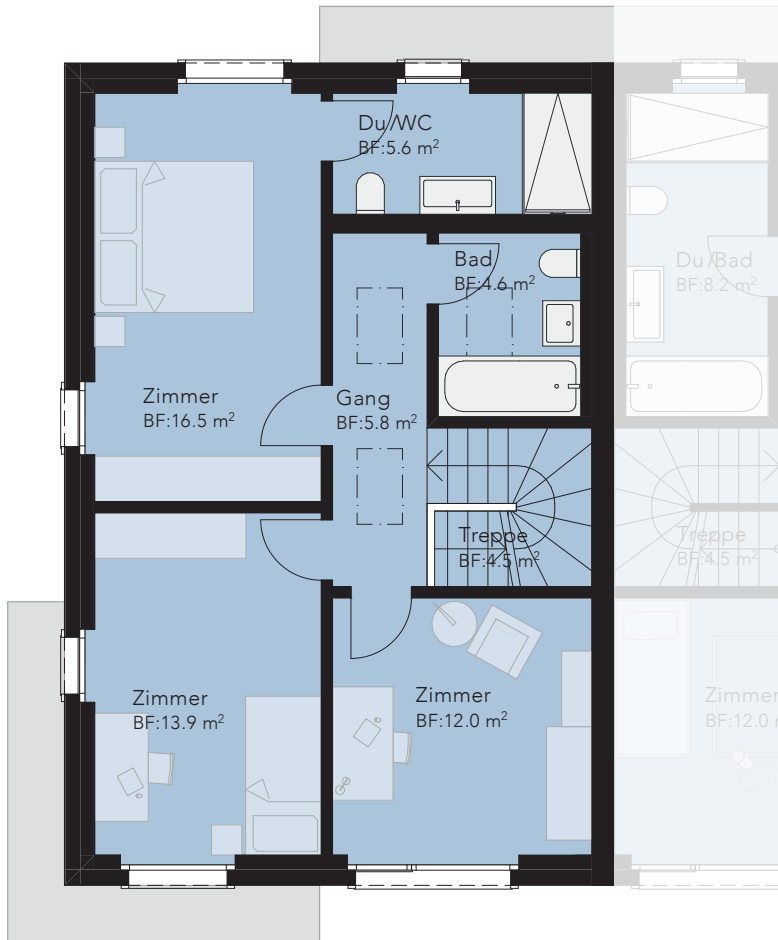


Wohnfläche	116,0m ²	Garten 3C	114,9m ²
Sitzplatz	13,7m ²	Keller/UG 3C	45,0m ²
		Garten 7B	112,7m ²
		Keller/UG 7B	40,1m ²

ERDGESCHOSS



1.OBERGESCHOSS



DACHAUFSICHT

